



83 – 85  
Mansell Street  
London E1

Ready When You Are



83 - 85  
Mansell Street  
London E1

83-85 Mansell Street was designed by the renowned twentieth century architect John Winter. Its glass facades and rectangular floors provide well configured space with excellent natural light.

The third floor and common parts have been comprehensively refurbished with new services and finishes for twenty-first century creative and technologically efficient business occupation.



  
New Space

  
Raised Floors

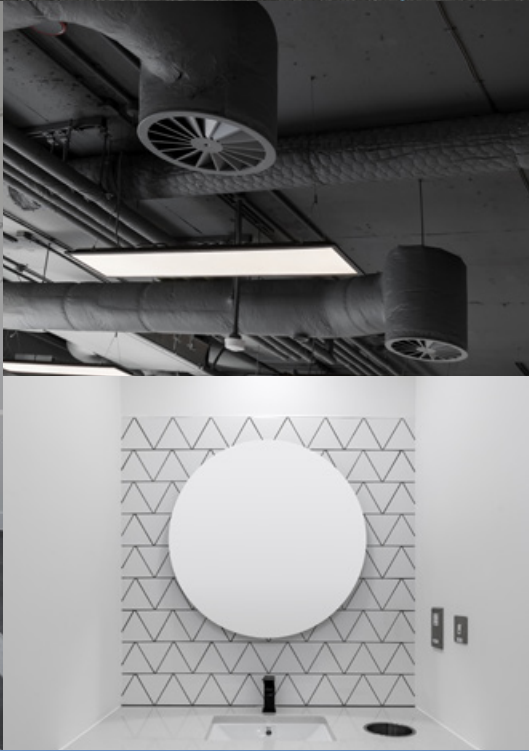
  
New Air Conditioning

  
Good ceiling Height

  
LED Lighting

  
Mixed Super Loos

EXCELLENT  
NATURAL LIGHT



MANNED  
RECEPTION



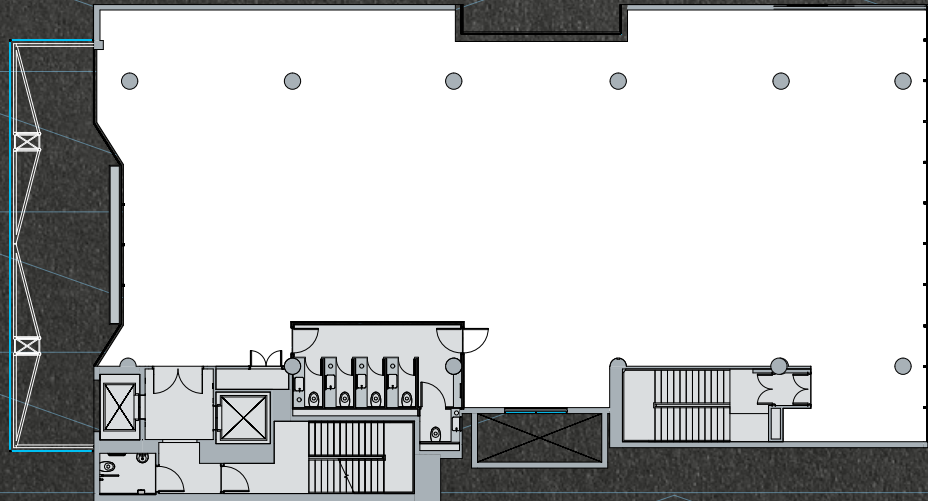
8 Person  
Lift



Cycle Storage  
& Maintenance  
Facility



Showers &  
Changing  
Facility



Floor plan not to scale. For indicative purposes only.

Accommodation

3rd Floor  
4,363 sq ft  
(405.48 sq m)





83-85 Mansell Street is well serviced by a range of transport connections. The building is within walking distance of Tower Hill, Aldgate, Aldgate East and Whitechapel Underground stations, which connects with the Elizabeth, Hammersmith and District lines. Fenchurch Street and Liverpool Street main line stations are also close by.

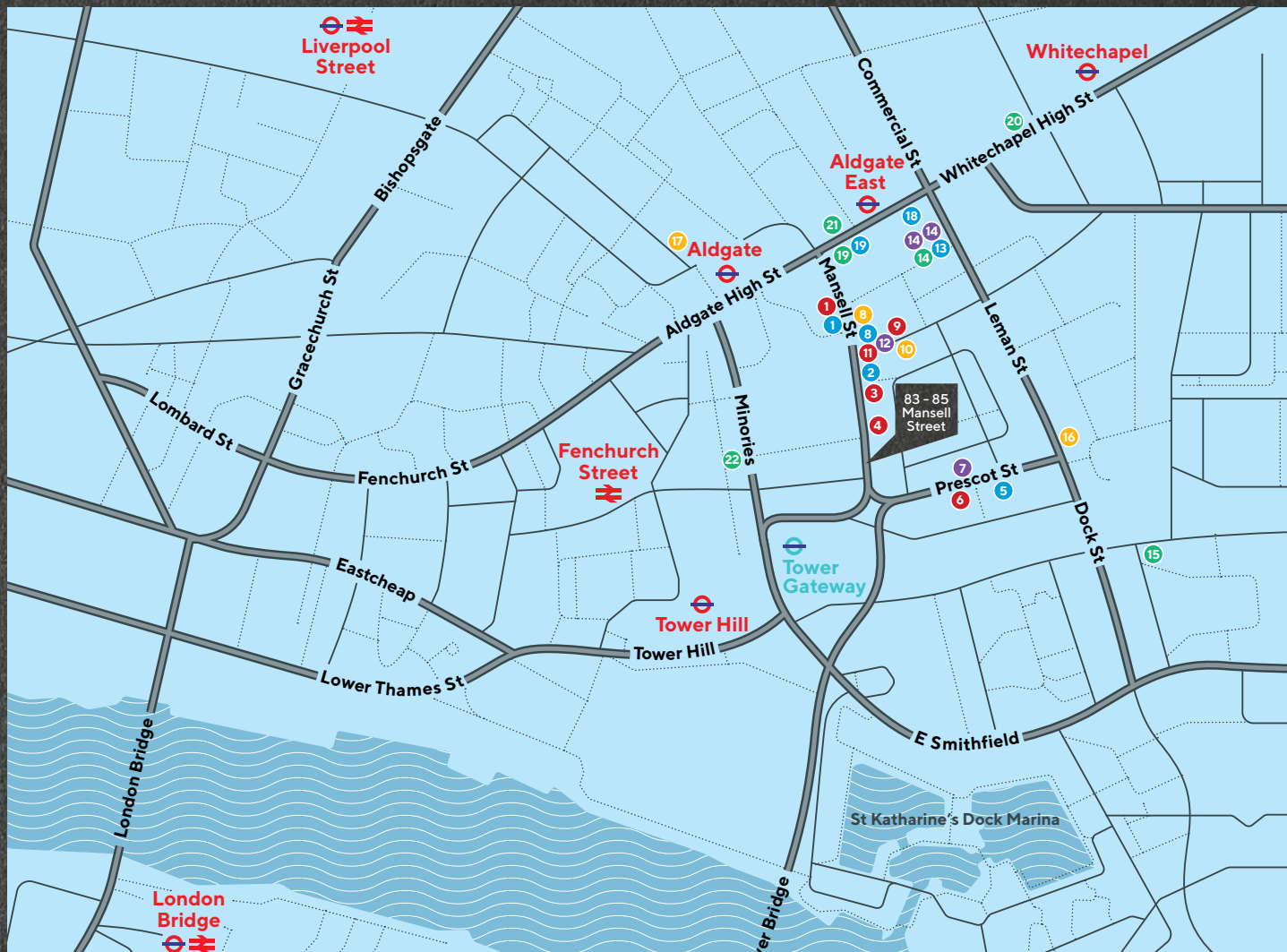
#### Walking times from 83-85 Mansell Street to near by stations

Tower Hill	4 min	
Tower Gateway	5 min	
Aldgate	5 min	
Aldgate East	7 min	
Fenchurch Street	9 min	
Liverpool Street	13 min	

#### Travel times to airports

London City	38 min
Gatwick	1 hr
Heathrow	1 hr 14 min
Stansted	1 hr 10 min
Luton	1 hr 26 min

Source: TFL



Aldgate is currently home to an eclectic array of office occupiers, as well as significant retail and leisure offerings.

#### BUSINESS

- 1 Collegiate Underwriting
- 2 SunGard
- 5 HTA Design Llp
- 5 Lowe Profero Mullen
- 5 Netboost
- 5 Redactive Media
- 8 Kuoni Travel
- 8 Samsara IOT
- 8 VRS Vericlam
- 13 BT Plc headquarters
- 18 Aecom
- 18 Essensy
- 18 Ince solicitor
- 18 Tag Worldwide Media
- 18 Uber
- 19 Perkins & Will
- 19 Reddie & Grose
- 19 The Shipowners's Club
- 19 Unruly Media
- 21 Four Communications Group

#### CULTURE

- 14 Curzon Cinema Aldgate
- 15 Wilton's Music Hall
- 19 Fotografiska
- 20 Whitechapel Art Gallery
- 22 Roman Wall

#### FITNESS

- 8 Orange Theory Fitness
- 10 Anytime Fitness
- 16 Urban Fitness
- 17 Pure Gym

#### HOTELS

- 7 Rockwell East
- 12 Grange Hotel Tower Bridge
- 14 Premier Inn
- 14 Travelodge

#### INSTITUTIONS

- 1 Fight for Sight
- 3 The Institute of Health Management
- 4 The Chartered Institute of Public Finance and Accountancy
- 6 The Royal College of Psychiatrists
- 9 East London NHS Foundation Trust
- 11 Royal College of Pathologists

For further information and to arrange a viewing, contact letting agents.



James Pickthorn  
+44 (0)20 7621 3402  
James.pickthorn@pickthorn.co.uk



Nick Russell-Smith  
+44 (0)20 7456 0717  
nrs@newtonperkins.com

The agents for themselves and for the lessor/vendor of the property whose agents they are, give notice that these particulars do not constitute any part of an offer or a contract. None of the statements contained in these particulars as to this property are to be relied on as a statement or representation of fact. Any intending lessee must satisfy himself by inspection or otherwise as the correctness of each of the statements contained in these particulars. The lessor/vendor does not make or give, and neither the agent nor any person in their employment has any authority to give, and representation or warranty whatever in relation to this property.